



UI.COM



NanoStation[®] AC loco

5 GHz airMAX[®] AC Radio

Model: Loco5AC

QUICK START GUIDE

Introduction

Thank you for purchasing the Ubiquiti® NanoStation® 5AC loco. This Quick Start Guide is designed to guide you through the installation and also includes warranty terms.

Package Contents



NanoStation loco



Zip Tie



Quick Start Guide

Installation Requirements

- Shielded Category 5 (or above) cabling with drain wire should be used for all outdoor wired Ethernet connections and should be grounded through the AC ground of the PoE.

We recommend that you protect your networks from harmful outdoor environments and destructive ESD events with industrial-grade, shielded Ethernet cable from Ubiquiti. For more details, visit ui.com/toughcable

- Surge protection should be used for all outdoor installations. We recommend that you use two Ethernet Surge Protectors, model ETH-SP, one near the NanoStation loco and the other at the entry point to the building. The ETH-SP will absorb power surges and safely discharge them into the ground.

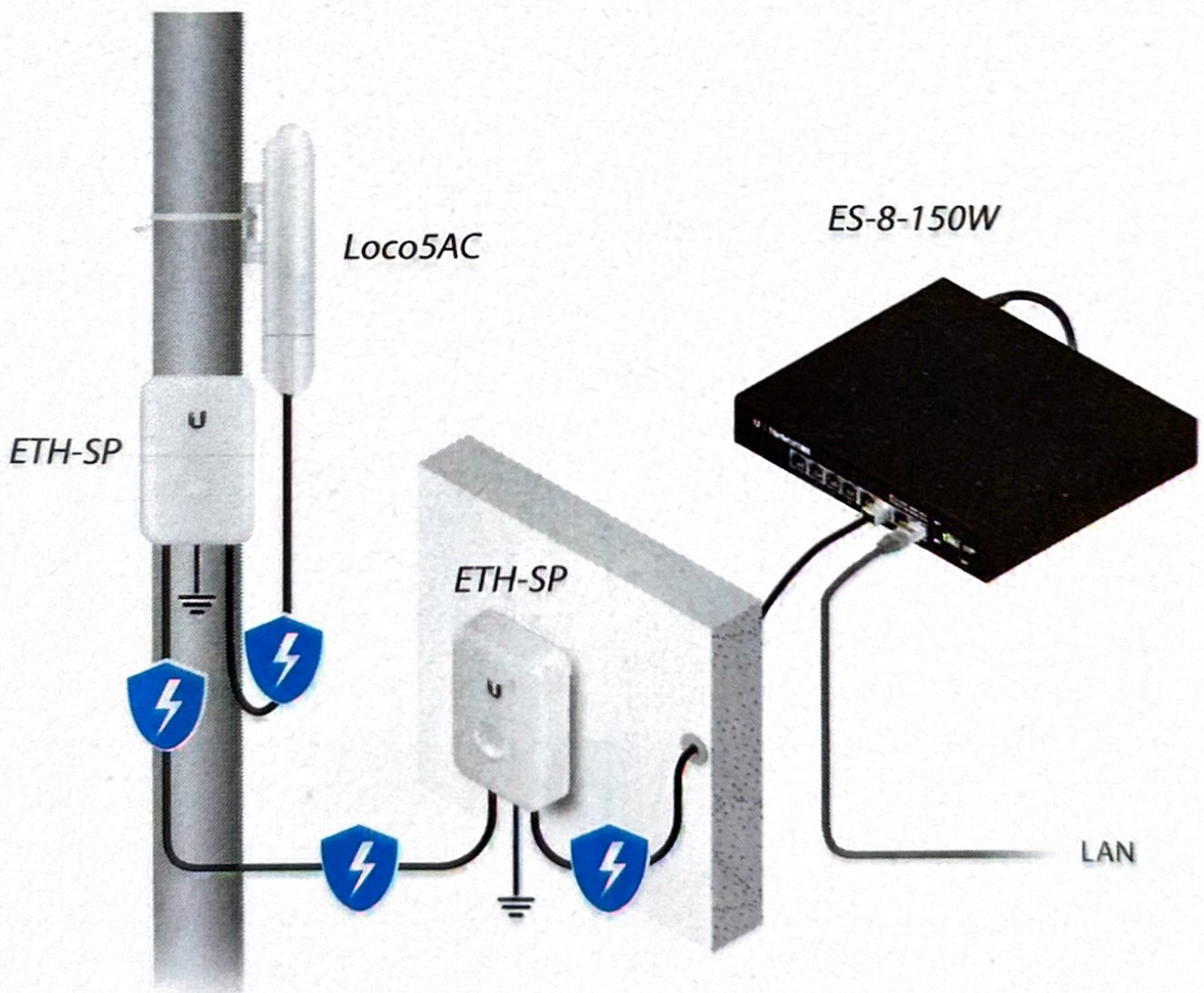
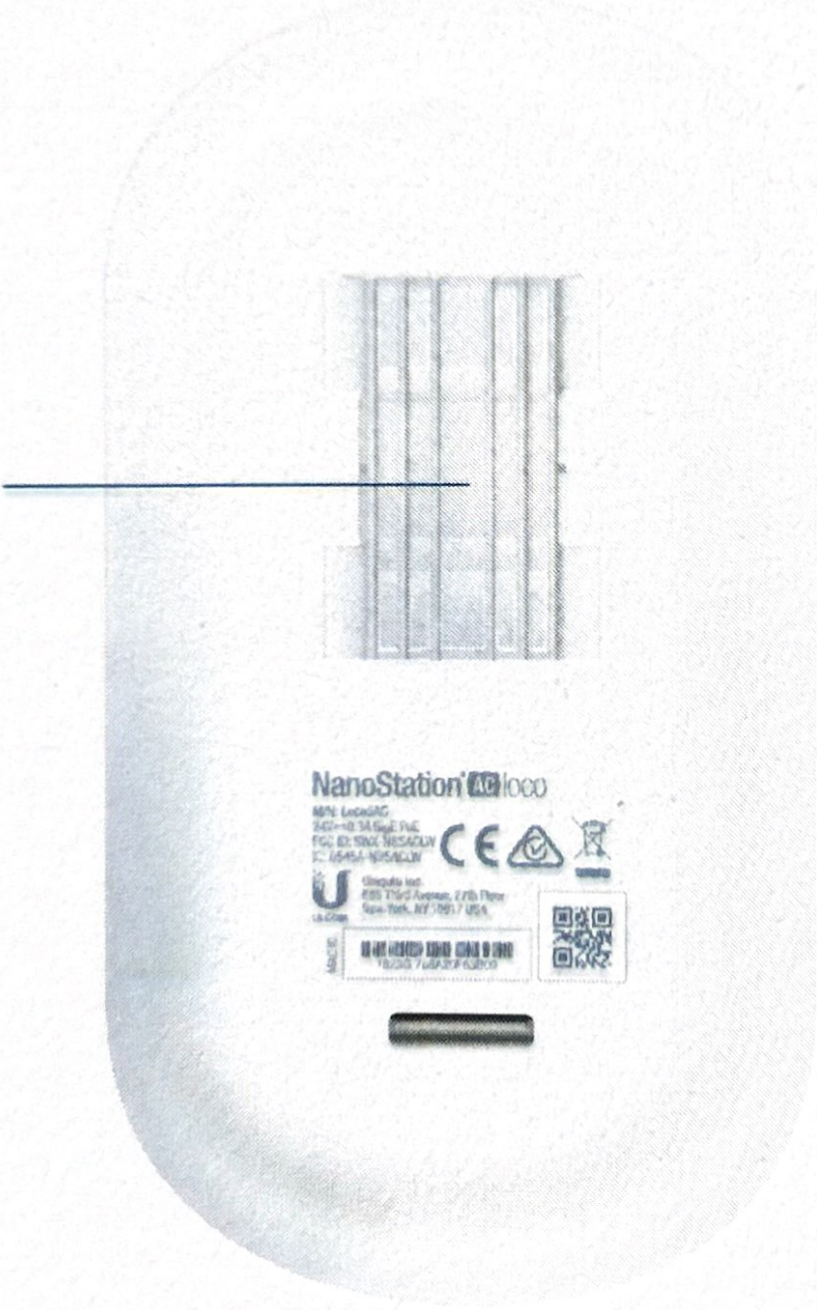


Diagram Showing Use of Ethernet Surge Protectors

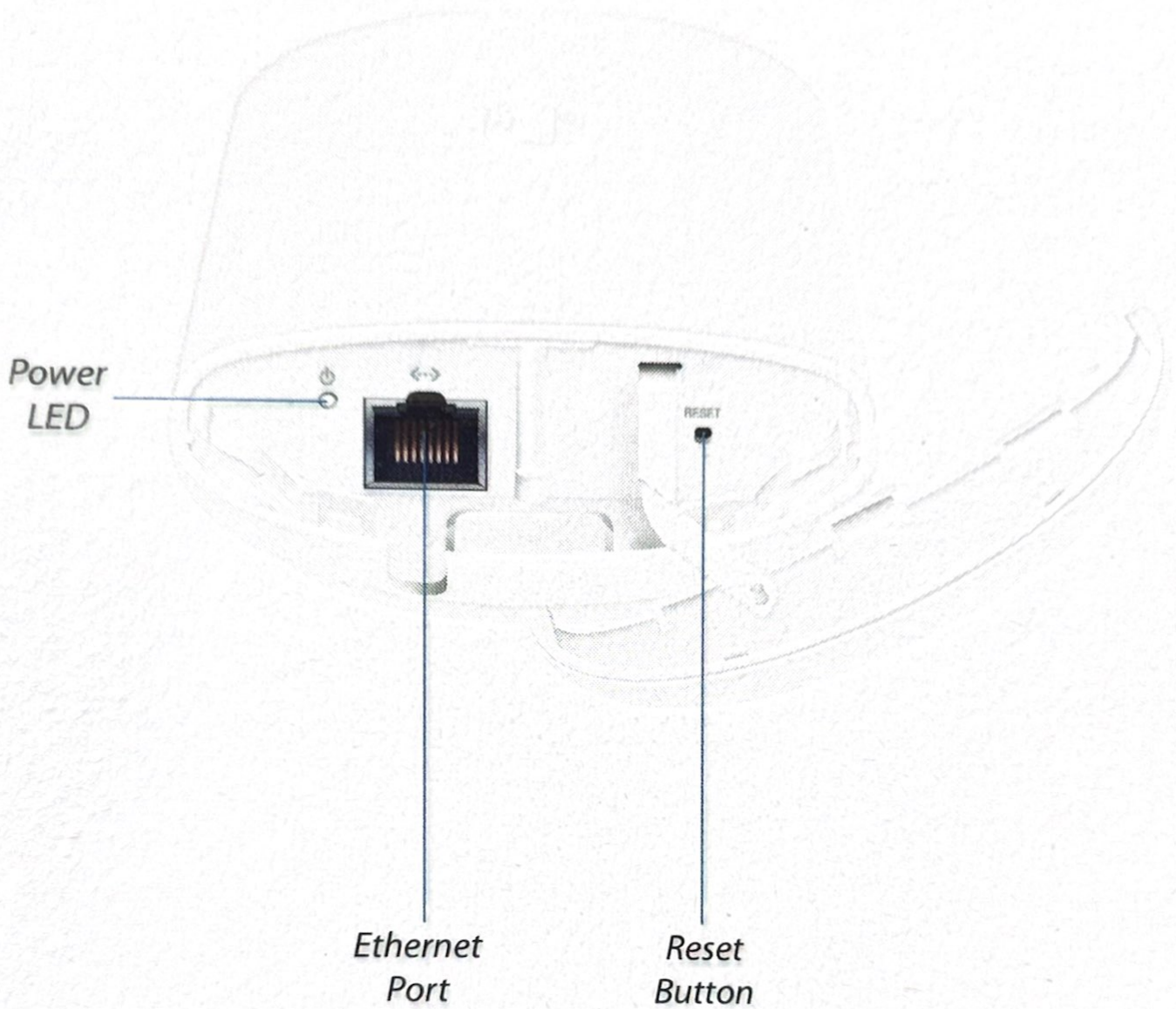
Hardware Overview

Back View

Mounting
Bracket



Port View



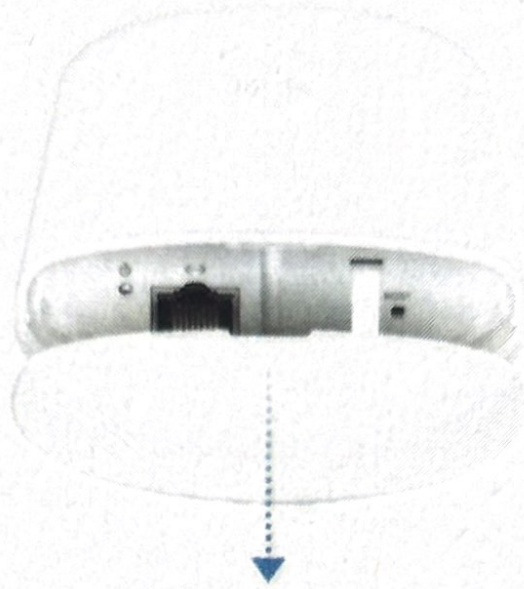
Power LED The Power LED will light blue when the device is connected to a power source.

Ethernet Port 10/100/1000 Ethernet port used to connect the power and should be connected to the LAN and DHCP server.

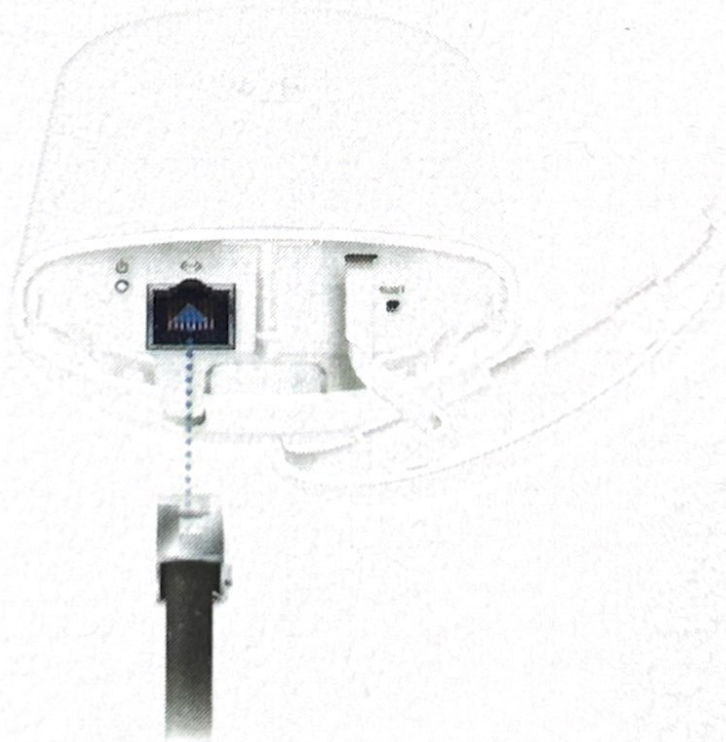
Reset Button To reset to factory defaults, press and hold the *Reset* button for more than 10 seconds while the NanoStation loco is powered on.

Hardware Installation

1. Remove the port cover by pressing down on the center of the cover and sliding the cover out.



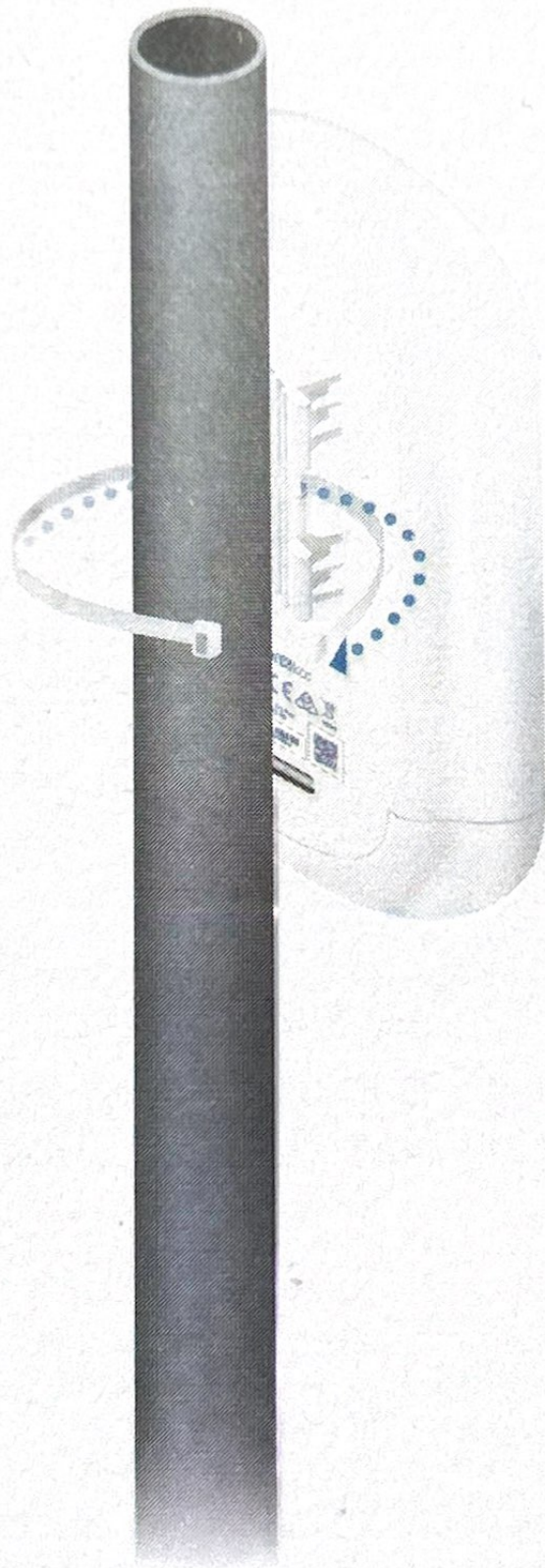
2. Connect an Ethernet cable to the *Ethernet Port*.



3. Replace the port cover.

Pole Mount

1. Position the NanoStation loco at the desired location on a pole and insert a *Zip Tie* into the slot of the *Mounting Bracket*.



2. Align the front of the NanoStation loco toward the other end of the wireless link. Then tighten the *Zip Tie* around the pole.



3. Connect the Ethernet cable from the NanoStation loco's *Ethernet* port to a PoE-enabled Ethernet port on a switch.



WARNING: The switch port must comply with the power specifications listed in the *Specifications* section of this Quick Start Guide.

Accessing airOS via Wi-Fi

Verify connectivity in the airOS® Configuration Interface. There are two methods, the UNMS™ app and Web Portal. Both are available for 15 minutes immediately after you power on the NanoStation loco. If necessary, you can power cycle the NanoStation loco to re-enable its Wi-Fi.

Proceed to the appropriate instructions:

UNMS App

1. Download the UNMS app from the App Store® (iOS) or Google Play™ (Android).

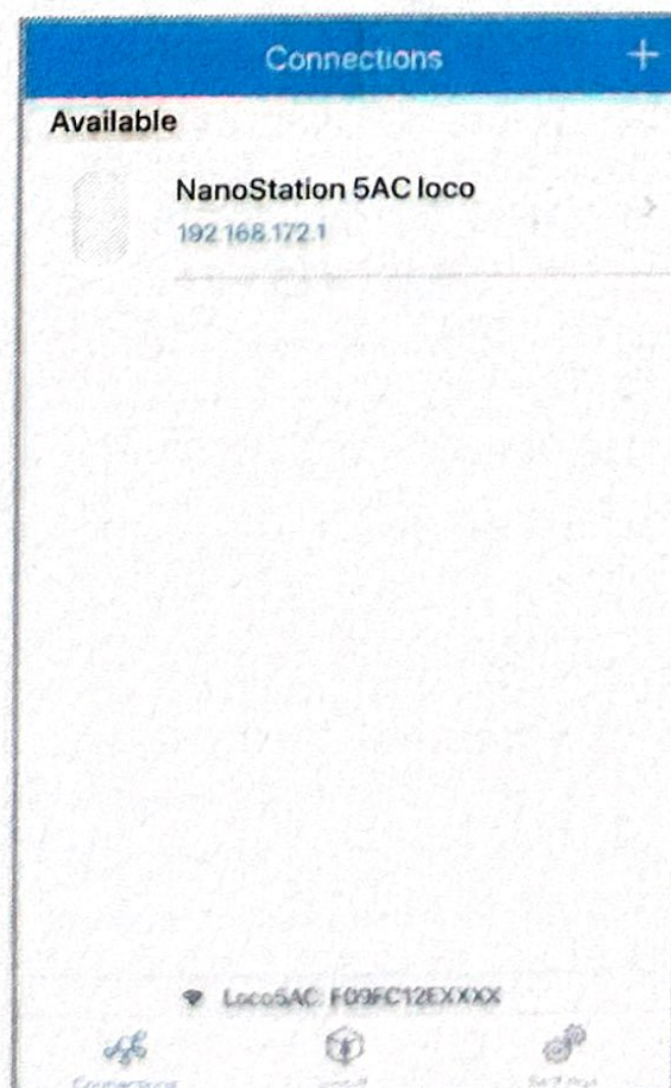


2. Connect your device's Wi-Fi to the NanoStation loco SSID named: **Loco5AC:<MAC Address>**

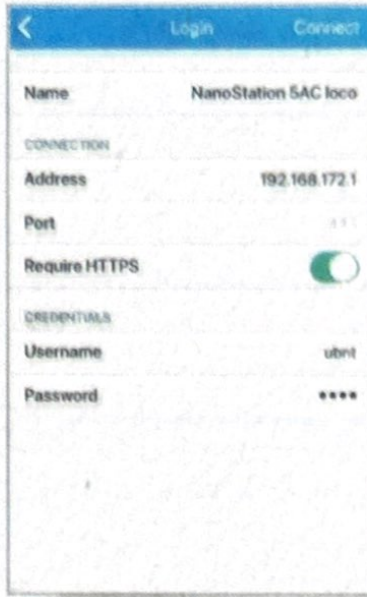


Note: Ensure that DHCP is enabled on your Wi-Fi adapter.

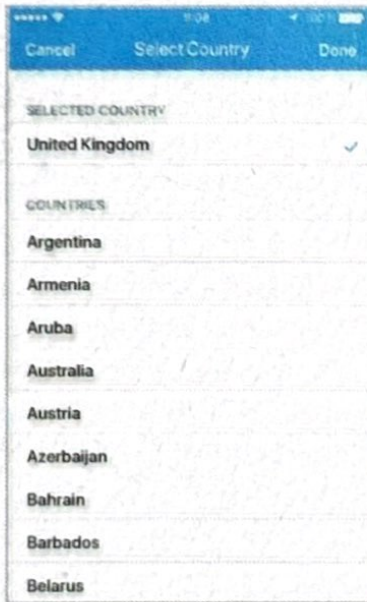
3. Launch the app.
4. Tap the NanoStation loco on the *Connections* screen.



5. Tap **Connect** on the *Login* screen.



6. Select your *Country* and tap **Done**.



7. Customize your settings as needed.



640-00349-10